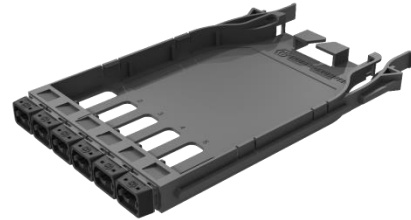


## IANOS®

### Base-12 MTP-MTP patch module

#### Description

- 6 x MTP12 patching module
- Fast and tool-less installation
- Facilitates patching to transceiver
- Compact and robust plastic construction
- Compatible with IANOS EDR 1U/ 4U and EDR zero space chassis
- Colour coded MTP adaptors



#### Technical data

Description	Value
Product family	IANOS
Suitable for	EDR chassis EDR zero space chassis
Dimensions (W x D x H)	97 x 165 x 12 mm/ 3.81 x 6.5 x 0.47 in
Weight	45 g / 1.59 oz
Material	PC/ABS
Colour	black (RAL 9005)
Number of adaptors	front: 6x MTP12 adaptor rear: n/a
Adaptor types	front: MTP12 adaptor Type A (Key Up / Key Down) field adjustable to Type rear: n/a
Adaptor colours	front: Black adaptor with black shroud (PC) or green shroud (APC) rear: n/a
Ferrule material	MTP: composite

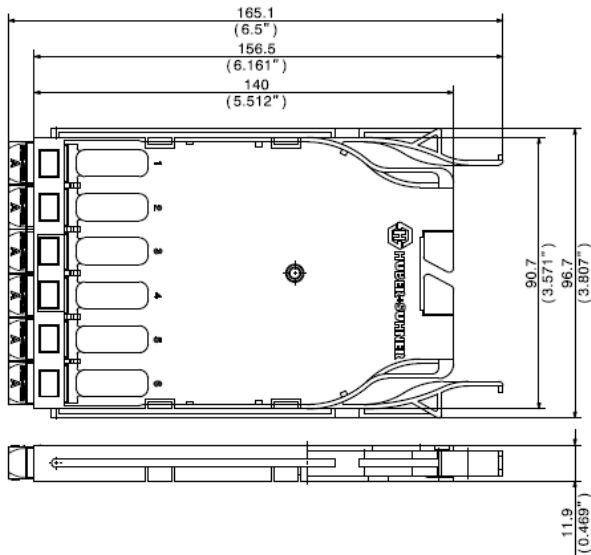
#### Environmental data

Characteristics	Value
Free of halogen	yes
2011/65/EC (RoHS)	fully compliant

## IANOS®

### Base-12 MTP-MTP patch module

#### Technical drawing



#### Ordering information

Description	Item number
Patching module, single size, Base-12, 6 x MTP12 adaptor body green, shroud black, key up/ key down	85072927
Patching module, single size, Base-12, 6 x MTP12 adaptor body green, shroud black, key up/ key up	85072928
Patching module, single size, Base-12, 6 x MTP12 adaptor body black, shroud black, key up/ key down	85072929
Patching module, single size, Base-12, 6 x MTP12 adaptor body black, shroud black, key up/ key up	85072930

#### Related documents

Installation manual      DOC-0000730269