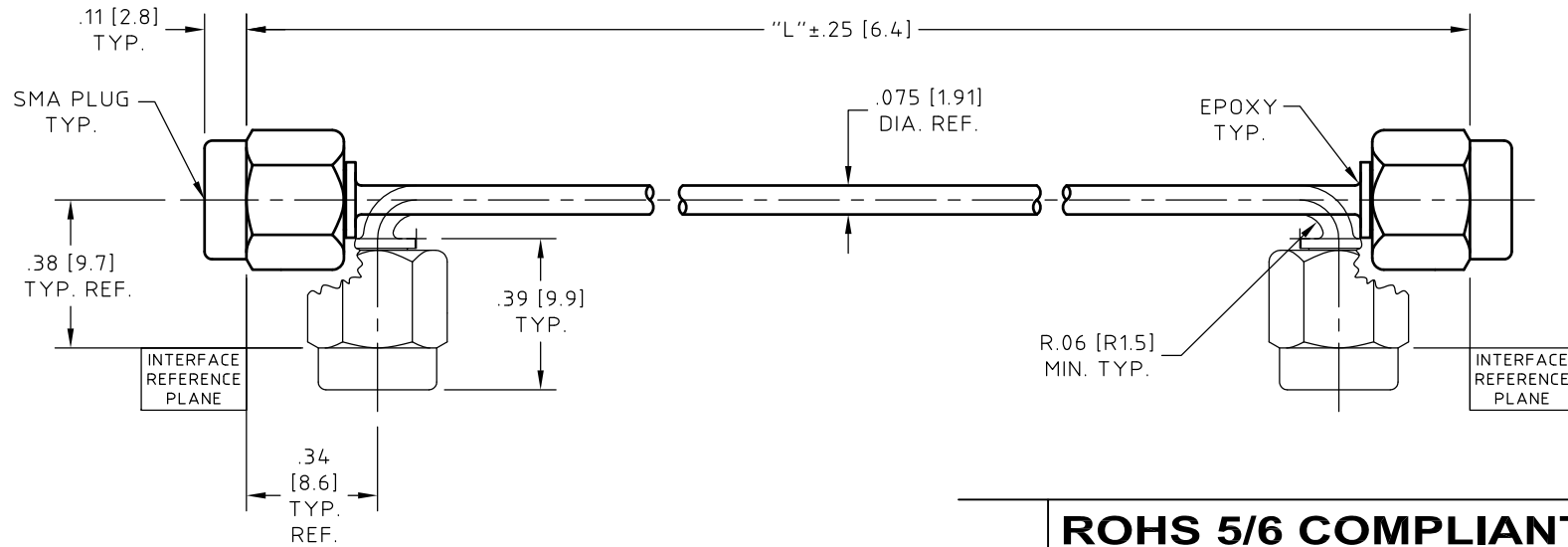


# CONTROL DRAWING

**microbend R-XX**

**L**



ROHS 5/6 COMPLIANT

**NOTES:**

1. DESCRIPTION,  
CABLE ASSEMBLY, SMA PLUG TO SMA PLUG,  
RUGGEDIZED AND SUITABLE FOR COMPLEX,  
CONGESTED INSTALLATIONS.  
WHEN INSTALLED AND BEND AT THE MINIMUM BEND  
RADIUS, CABLE ASSEMBLY WILL TOLERATE MULTIPLE  
±90° ROTATIONS AT THE CABLE CONNECTOR JUNCTION.
2. CABLE,  
COAXIAL CABLE HUBER+SUHNER Astrolab P/N 32041E.  
MEETS OR EXCEEDS MIL-DTL-17.  
SEE HUBER+SUHNER Astrolab CONTROL DRAWING  
FOR MATERIALS AND FINISHES.
3. CONNECTOR -A-, SMA PLUG:  
HUBER+SUHNER Astrolab P/N 29094CR-32-41  
INTERFACE DIMENSIONS IAW MIL-STD-348.  
SEE HUBER+SUHNER Astrolab CONTROL DRAWING  
FOR MATERIALS AND FINISHES.
4. CONNECTOR -B-, SMA PLUG:  
SAME AS CONNECTOR -A-.

**NOTES CONTINUED:**

5. MARKING:  
ALL MARKING WILL BE DONE ON PACKAGING.
6. ELECTRICAL CHARACTERISTICS:  
IMPEDANCE,  
50.0 Ohms NOMINAL.  
FREQUENCY, INSERTION LOSS AND VSWR  
SEE CHART.
7. MECHANICAL:  
OPERATING TEMPERATURE RANGE,  
-55° C TO +125° C.  
PULL STRENGTH TO 10.0 LBS. [44.5 N].
8. ATTENUATION FORMULAS:  
8A. CALCULATE AT 18.0 GHz  
(dB) = 1.45 dB/FT. X L(ft.)+.28 dB  
8B. CALCULATE AT 26.5 GHz  
(dB) = 1.80 dB/FT. X L(ft.)+.34 dB

HUBER+SUHNER Astrolab PART NUMBER	DIMENSION "L"	2.0 GHz		18.0 GHz		26.5 GHz	
		VSWR	IL. dB	VSWR	IL. dB	VSWR	IL. dB
microbend R-2.5	2.50 [63.5]	1.20:1	0.21	1.37:1	0.58	1.45:1	0.72
microbend R-3	3.00 [76.2]	1.20:1	0.23	1.37:1	0.64	1.45:1	0.80
microbend R-3.5	3.50 [88.9]	1.20:1	0.25	1.37:1	0.70	1.45:1	0.87
microbend R-4	4.00 [101.6]	1.20:1	0.27	1.37:1	0.76	1.45:1	0.95
microbend R-4.5	4.50 [114.3]	1.20:1	0.29	1.37:1	0.82	1.45:1	1.03
microbend R-5	5.00 [127.0]	1.20:1	0.31	1.37:1	0.88	1.45:1	1.10
microbend R-5.5	5.50 [139.7]	1.20:1	0.33	1.37:1	0.95	1.45:1	1.18
microbend R-6	6.00 [152.4]	1.20:1	0.35	1.37:1	1.01	1.45:1	1.25
microbend R-7	7.00 [177.8]	1.20:1	0.38	1.37:1	1.13	1.45:1	1.39
microbend R-8	8.00 [203.2]	1.20:1	0.42	1.37:1	1.25	1.45:1	1.54
microbend R-9	9.00 [228.6]	1.20:1	0.46	1.37:1	1.37	1.45:1	1.69
microbend R-10	10.00 [254.0]	1.20:1	0.50	1.37:1	1.49	1.45:1	1.84
microbend R-11	11.00 [279.4]	1.20:1	0.53	1.37:1	1.61	1.45:1	1.99
microbend R-12	12.00 [304.8]	1.20:1	0.57	1.37:1	1.73	1.45:1	2.14
microbend R-		1.20:1		1.37:1		1.45:1	

SEE NOTE 8

UNLESS OTHERWISE SPECIFIED  
CONCENTRICITY .004 T.I.R.  
CORNERS AND FILLETS .005  
MAX. RADIUS OR CHAMFER.  
SURFACE FINISH 63 RMS  
MICROINCHES OR BETTER.

FRACTIONS	± 1/16
X	± .030
XX	± .015
XXX	± .005
ANGLES	± 1°
DO NOT SCALE DRAWING	

NAME	DATE
PREP. AP	11/20/03
ELEC. RF	11/21/03
MECH. GSG	11/21/03
Q.C. AG	11/21/03

**HUBER+SUHNER**  
**Astrolab**

THIS DRAWING CONTAINS PATENTABLE AND PROPRIETARY  
INFORMATION. THE DESIGN CANNOT BE USED WITHOUT  
WRITTEN PERMISSION OF HUBER + SUHNER ASTROLAB.

TITLE		CABLE ASSY, TYPE microbend, SMA PLUG TO SMA PLUG	
THDS. TO BE IN ACCORD WITH U.S. DEPT. OF COMM. SCREW THD. STDS. FOR FEDERAL SERVICES 1950 SUPL. TO HANDBOOK H 28.	SCALE <b>2:1</b>	CODE IDENT. <b>16301</b>	DWG NO. <b>microbend R-XX</b>

L	ECN No. 15788	09/06/13	EB	
REV.	DESCRIPTION	DATE	BY	APPROVED

L