

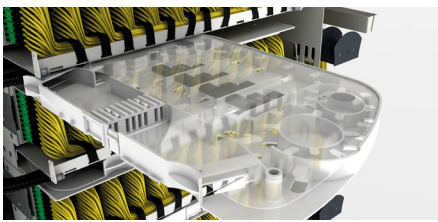
SYLFA HD

Next-generation front access solution

New features

04.2024

Effortless splicing



Spacious splice tray located conveniently below the modules allows for smooth handling and lightning-fast routing for optimized performance.

Maximise space



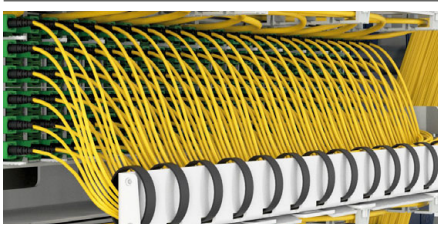
High port density combined with proven NGR rack enables up to 4,032 fibers while providing excellent support for organising patch cord overlengths.

Save time



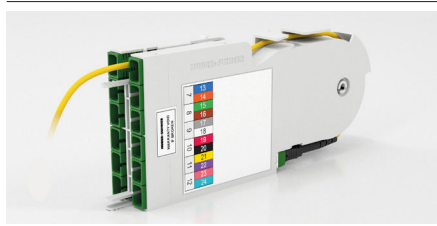
Fast and effective installation through pre-terminated plug and play connectivity, and simplified routing in the splice process saves up to 15% of time.

Improve accessibility



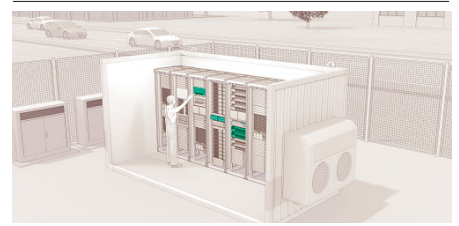
All incoming and outgoing cables are accessible from the front. Conduits ranging from 4mm, 5mm and 13mm can increase overall accessibility and speed up the installation process.

Fiber protection



The fixed module design allows no movement while patching as both incoming and outgoing cables are fixed.

2-in-1



Integrate indoor and outdoor applications into one system. Slyfa HD fits in NGR, 19 inch racks and street cabinets. Its modular design ensures scalability and flexibility to upgrade to a future-ready network.