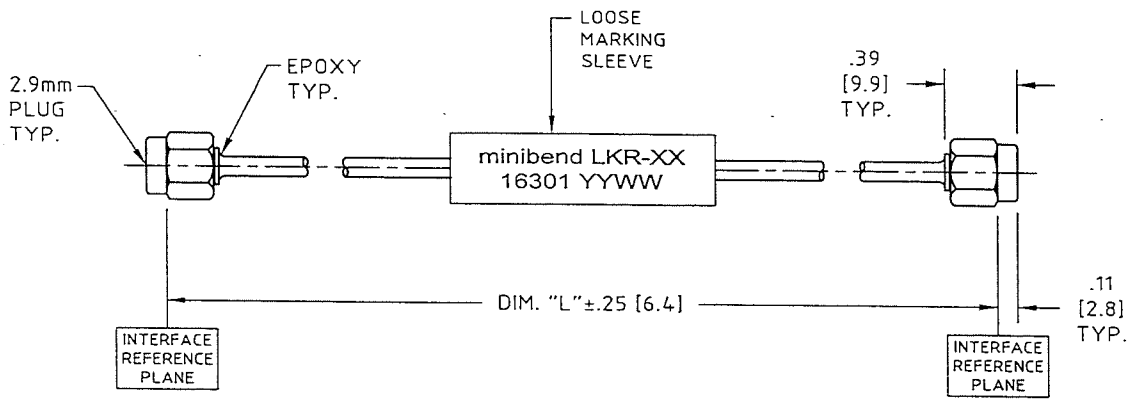


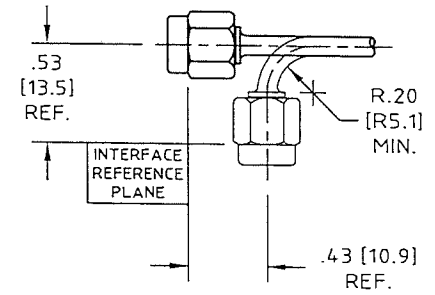
# CONTROL DRAWING



minibend LKR-XX

minibend LKR-XX

D



SHOWN ABOVE IS TYPICAL INSTALLATION.

| H+S Astrolab<br>PART NUMBER | DIMENSION<br>"L" IN [mm] | 2.0 GHz |        | 26.5 GHz |        | 40.0 GHz |        |
|-----------------------------|--------------------------|---------|--------|----------|--------|----------|--------|
|                             |                          | VSWR    | IL, dB | VSWR     | IL, dB | VSWR     | IL, dB |
| minibend LKR-2.5            | 2.50 [63.5±3.3]          | 1.18:1  | 0.18   | 1.45:1   | 0.54   | 1.50:1   | 0.80   |
| minibend LKR-3              | 3.00 [76.2±3.3]          | 1.18:1  | 0.19   | 1.45:1   | 0.58   | 1.50:1   | 0.85   |
| minibend LKR-3.5            | 3.50 [88.9±3.3]          | 1.18:1  | .020   | 1.45:1   | 0.63   | 1.50:1   | 0.91   |
| minibend LKR-4              | 4.00 [101.6±3.3]         | 1.18:1  | 0.22   | 1.45:1   | 0.67   | 1.50:1   | 0.96   |
| minibend LKR-4.5            | 4.50 [114.3±3.3]         | 1.18:1  | 0.23   | 1.45:1   | 0.72   | 1.50:1   | 1.02   |
| minibend LKR-5              | 5.00 [127.0±3.3]         | 1.18:1  | 0.24   | 1.45:1   | 0.76   | 1.50:1   | 1.07   |
| minibend LKR-5.5            | 5.50 [139.7±3.3]         | 1.18:1  | 0.25   | 1.45:1   | 0.81   | 1.50:1   | 1.13   |
| minibend LKR-6              | 6.00 [152.4±3.3]         | 1.18:1  | 0.27   | 1.45:1   | 0.86   | 1.50:1   | 1.19   |
| minibend LKR-6.5            | 6.50 [165.1±3.3]         | 1.18:1  | 0.28   | 1.45:1   | 0.90   | 1.50:1   | 1.24   |
| minibend LKR-7              | 7.00 [177.8±3.3]         | 1.18:1  | 0.29   | 1.45:1   | 0.95   | 1.50:1   | 1.30   |
| minibend LKR-8              | 8.00 [203.2±3.3]         | 1.18:1  | 0.31   | 1.45:1   | 1.04   | 1.50:1   | 1.41   |
| minibend LKR-9              | 9.00 [228.6±3.3]         | 1.18:1  | 0.34   | 1.45:1   | 1.13   | 1.50:1   | 1.52   |
| minibend LKR-10             | 10.00 [254.0±3.3]        | 1.18:1  | 0.36   | 1.45:1   | 1.22   | 1.50:1   | 1.63   |
| minibend LKR-11             | 11.00 [279.4±3.3]        | 1.18:1  | 0.39   | 1.45:1   | 1.31   | 1.50:1   | 1.74   |
| minibend LKR-12             | 12.00 [304.8±3.3]        | 1.18:1  | 0.41   | 1.45:1   | 1.40   | 1.50:1   | 1.85   |
| minibend LKR-13             | 13.00 [330.2±3.3]        | 1.18:1  | 0.43   | 1.45:1   | 1.49   | 1.50:1   | 1.96   |
| minibend LKR-14             | 14.00 [355.6±3.3]        | 1.18:1  | 0.46   | 1.45:1   | 1.58   | 1.50:1   | 2.07   |
| minibend LKR-15             | 15.00 [381.0±3.3]        | 1.18:1  | 0.48   | 1.45:1   | 1.67   | 1.50:1   | 2.18   |
| minibend LKR-16             | 16.00 [406.4±3.3]        | 1.18:1  | 0.51   | 1.45:1   | 1.76   | 1.50:1   | 2.29   |
| minibend LKR-               |                          |         |        |          |        |          |        |

NOTES:

- DESCRIPTION,  
CABLE ASSEMBLY, LOW OUTGASSING,  
2.9mm (SMK) PLUG TO 2.9mm PLUG.
- CABLE,  
COAXIAL CABLE H+S Astrolab P/N 32024E  
MEETS OR EXCEEDS MIL-DTL-17  
SEE H+S Astrolab CONTROL DRAWING  
FOR MATERIALS AND FINISHES.
- CONNECTOR -A-, 2.9mm PLUG:  
H+S Astrolab P/N 29094KCR-32-24  
IAW MIL-STD-348.  
SEE H+S Astrolab CONTROL DRAWING  
FOR MATERIALS AND FINISHES.
- CONNECTOR -B-, 2.9mm PLUG:  
SAME AS CONNECTOR -A-.
- MARKING:  
MATERIAL, HEAT SHRINKABLE SLEEVING PER  
SAE-AMS-DTL-23053.  
MARKING, .060 [1.52] MIN. TALL CHARACTERS IN  
CONTRASTING COLOR AND IAW MIL-STD-130,  
DATE CODE PER MIL-STD-1285

NOTES CONTINUED, MARKING:

- MARKING PERMANENCE IAW SAE-AMS-81531.  
CABLE ASSEMBLIES MEASURING 3.00"  
OR SHORTER WILL HAVE NO  
MARKER SLEEVES.
- ELECTRICAL CHARACTERISTICS:  
IMPEDANCE,  
50.0 Ohms NOMINAL.  
FREQUENCY, INSERTION LOSS AND VSWR  
SEE CHART.
- MECHANICAL:  
OPERATING TEMPERATURE RANGE,  
-55° C TO +125° C.  
PULL STRENGTH TO 25.0 LBS [67 N].  
CABLE ASSEMBLY LENGTH "L"  
MEASURED IAW MIL-PRF-55427.
- OUTGASSING:  
ASSEMBLY MEETS OR EXCEEDS NASA  
LOW OUTGASSING REQUIREMENTS.

| NAME      | DATE     |  |
|-----------|----------|--|
| PREP. EB  | 09/26/08 |  |
| ELEC. RF  | 09/26/08 |  |
| MECH. GSG | 09/26/08 |  |
| Q.C.      |          |  |

UNLESS OTHERWISE SPECIFIED  
CONCENTRICITY .004 T.I.R.  
CORNERS AND FILLETS .005  
MAX. RADIUS OR CHAMFER.  
SURFACE FINISH 63 RMS  
MICROINCHES OR BETTER.

|                      |        |
|----------------------|--------|
| FRACTIONS            | ± 1/16 |
| X                    | ± .030 |
| XX                   | ± .015 |
| XXX                  | ± .005 |
| ANGLES               | ± 1°   |
| DO NOT SCALE DRAWING |        |

|   |  |             |                 |     |
|---|--|-------------|-----------------|-----|
| TITLE   | minibend CABLE ASSEMBLY, 2.9mm (SMK) PLUG TO 2.9mm (SMK) PLUG. |             |                 |     |
| THDS. TO BE IN ACCORD WITH U.S. DEPT. OF COMM. SCREW THD. STDS. FOR FEDERAL SERVICES 1950 SUPL. TO HANDBOOK H 28. | SCALE  | CODE IDENT. | DWG NO.         | REV |
|   | 1:1  | 16301       | minibend LKR-XX | D   |

|      |                     |          |        |          |
|------|---------------------|----------|--------|----------|
| D    | COMPANY LOGO UPDATE | 01/15/13 | ESIG 2 |          |
| REV. | DESCRIPTION         | DATE     | BY     | APPROVED |