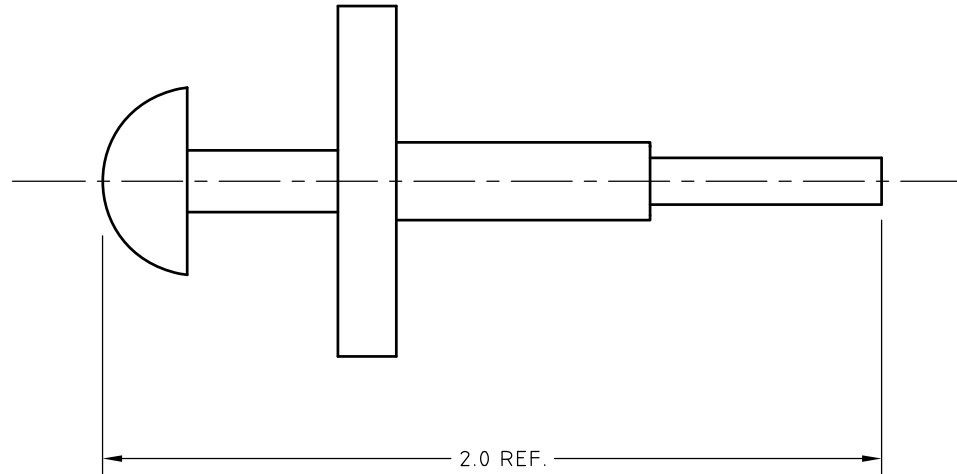


CONTROL DRAWING

AT-2377-DCM1

B



NOTES:

- 1. DESCRIPTION, REMOVAL TOOL, VITA 67 SMPM FEMALE

NAME	DATE
PREP. GS	04/15/15
ELEC.	
MECH. GSG	04/15/15
Q.C.	

HUBER+SUHNER
Astrolab

THIS DRAWING CONTAINS PATENTABLE AND PROPRIETARY INFORMATION. THE DESIGN CANNOT BE USED WITHOUT WRITTEN PERMISSION OF HUBER + SUHNER ASTROLAB.

UNLESS OTHERWISE SPECIFIED
CONCENTRICITY .004 T.I.R.
CORNERS AND FILLETS .005
MAX. RADIUS OR CHAMFER.
SURFACE FINISH 63 RMS
MICROINCHES OR BETTER.

FRACTIONS	± 1/16
X	± .030
XX	± .015
XXX	± .005
ANGLES	± 1°
DO NOT SCALE DRAWING	

TITLE	REMOVAL TOOL, VITA 67 SMPM FEMALE			
THDS. TO BE IN ACCORD WITH U.S. DEPT. OF COMM. SCREW THD. STDS. FOR FEDERAL SERVICES 1950 SUPPL. TO HANDBOOK H 28.	SCALE	CODE IDENT.	DWG NO.	REV
	2:1	16301	AT-2377-DCM1	B

B	DESCRIPTION CHANGED TO "REMOVAL TOOL"	04/15/15	GS	
REV.	DESCRIPTION	DATE	BY	APPROVED