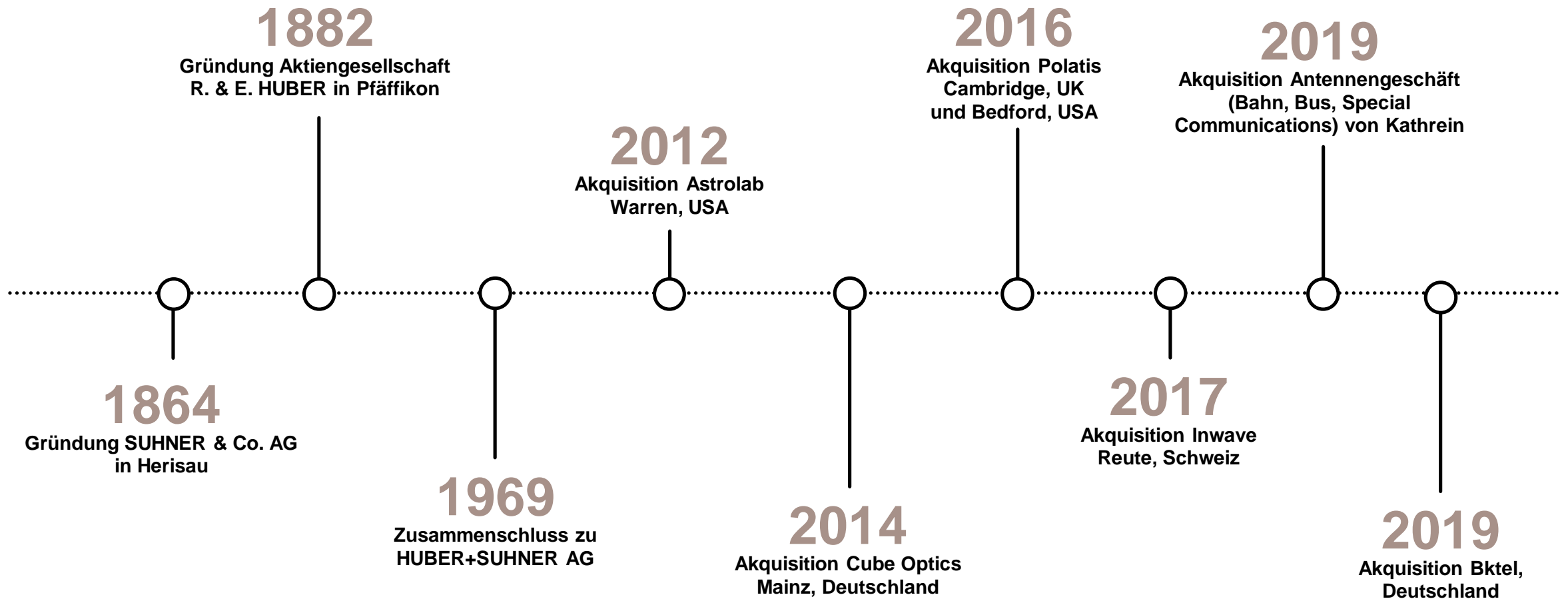


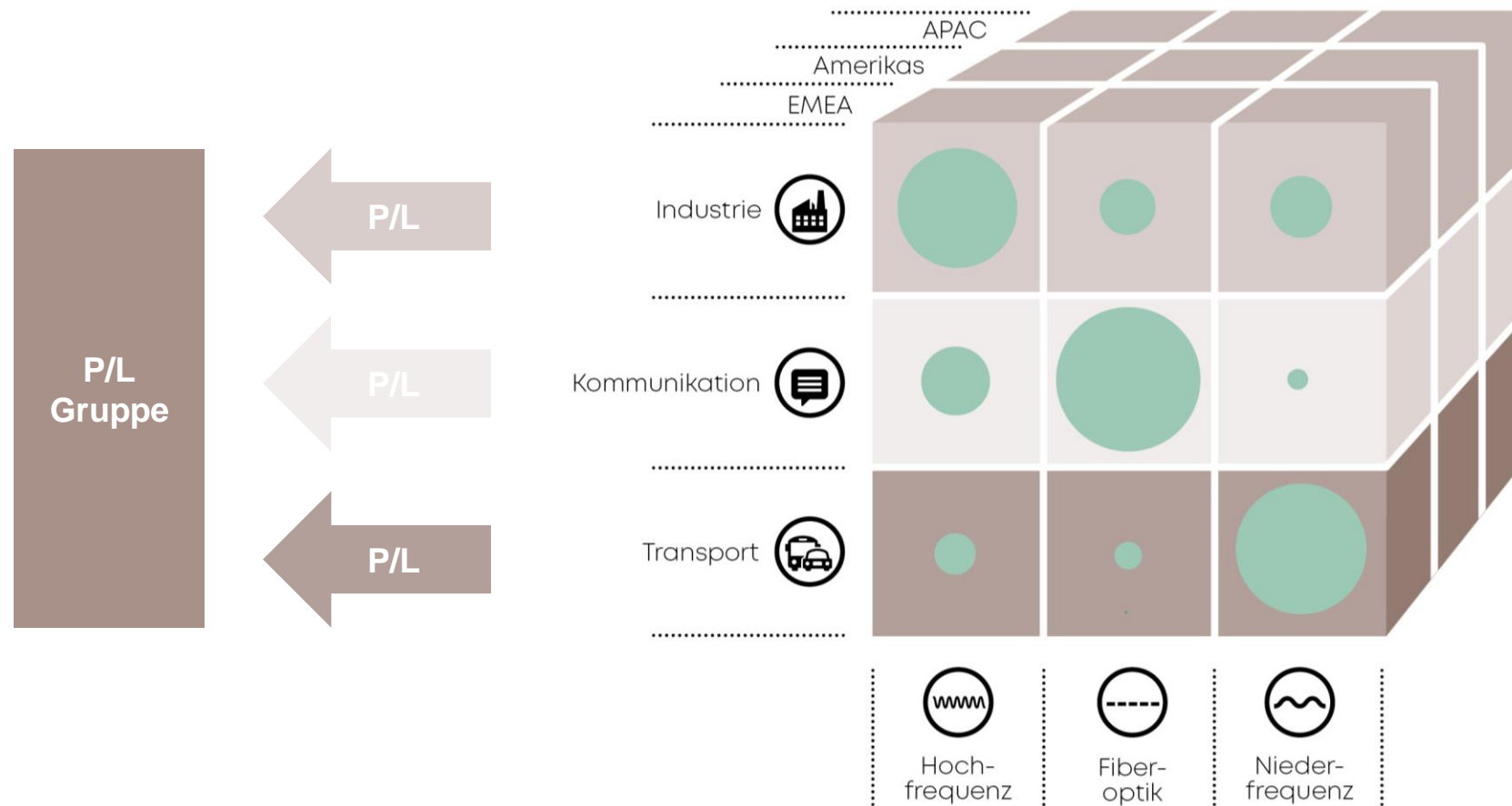
HUBER+SUHNER

Fakten & Zahlen

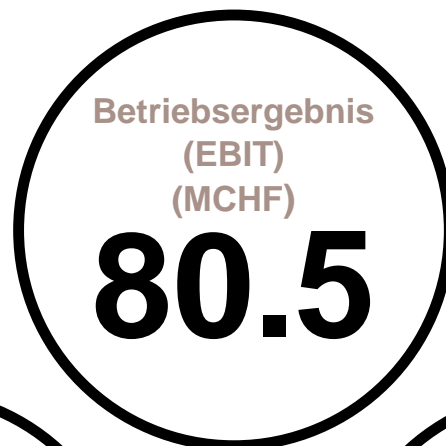
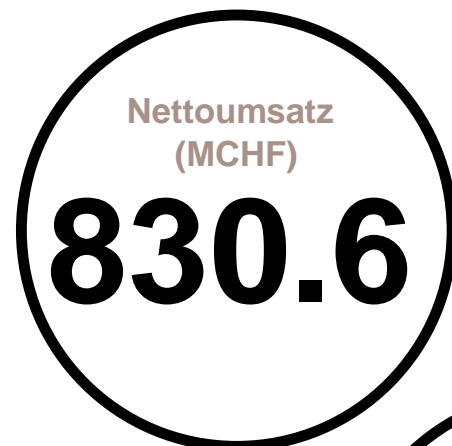
Unternehmensgeschichte



Die drei Dimensionen unseres Geschäfts



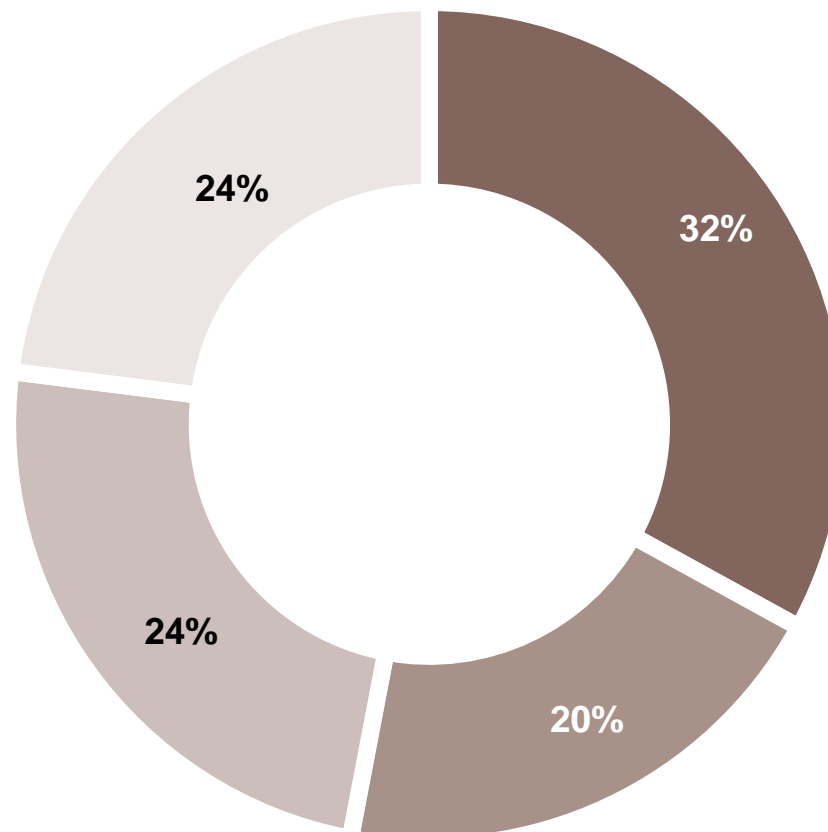
Schlüsselzahlen auf einen Blick 2019



Starke Kernaktionärsbasis

Circa 4,800 Aktionäre

- Bedeutende Aktionäre
- Institutionelle
- Natürliche Personen
- Nicht registriert



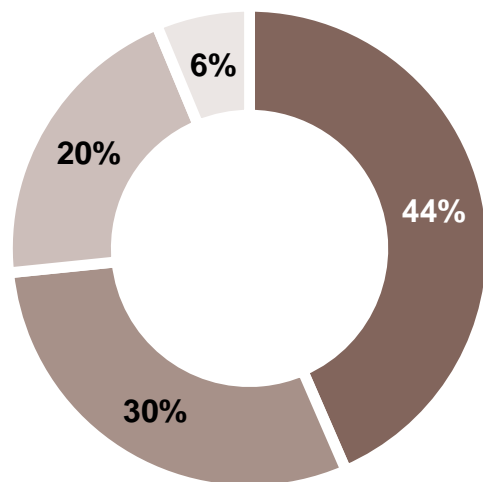
Bedeutende Aktionäre (>3%)*

- Metrohm AG 10.6%
- EGS Beteiligungen AG 9.2%
- S. Hoffmann-Suhner 6.2%
- Norges Bank 3.7%
- Huwa Finanz- und Beteiligungs AG 3.2%

* Stand 1. April 2020

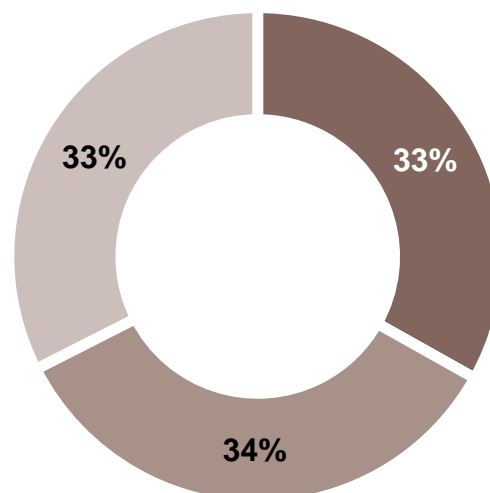
Nettoumsatz von MCHF 830.6 – Anteile 2019

nach Region



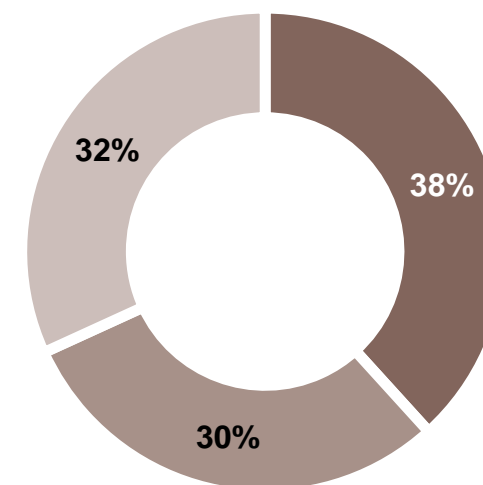
- EMEA
- Asien-Pazifik
- Amerikas
- Schweiz

nach Technologiesegment



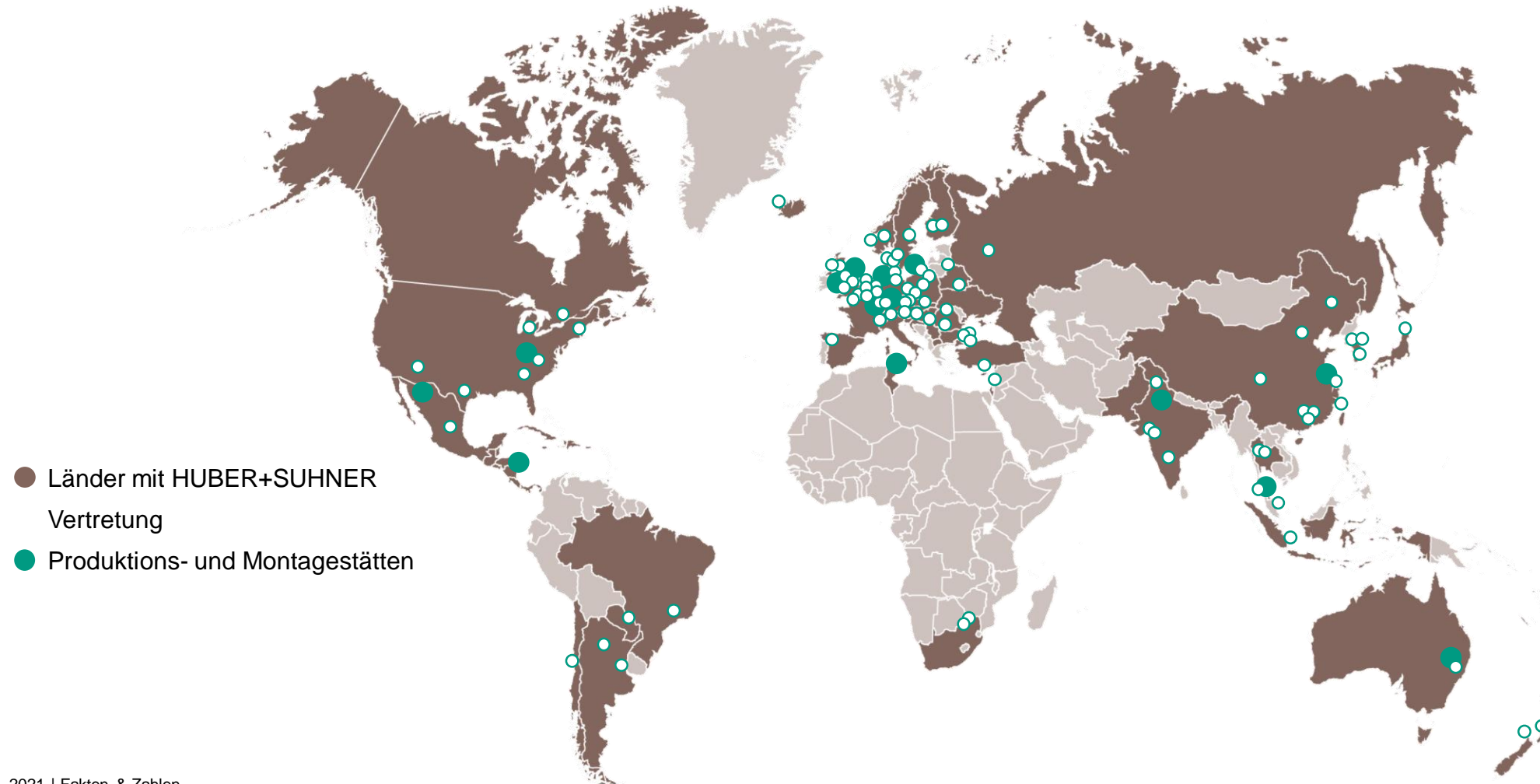
- Hochfrequenz
- Faseroptik
- Niederfrequenz

nach Markt

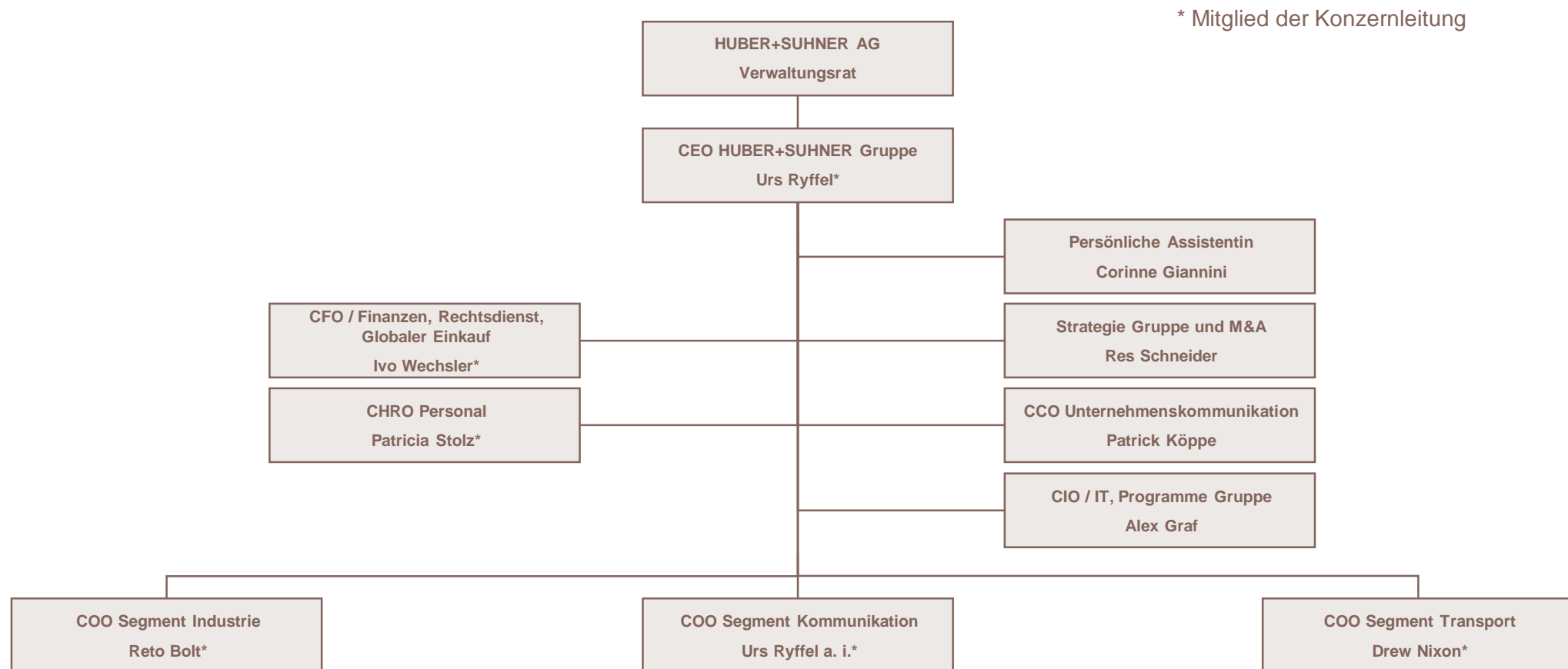


- Kommunikation
- Transport
- Industrie

Globales Netzwerk Verkauf, Engineering und Produktion



Organisation



The background of the image is a dark blue gradient. It features a complex network of glowing blue nodes, which are small, bright, circular points of light. These nodes are interconnected by a dense web of thin, light blue lines, creating a sense of connectivity and data flow. The overall aesthetic is futuristic and technological.

Connecting – today and beyond