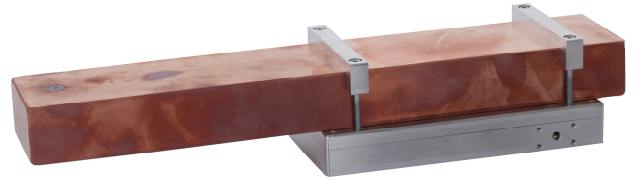


Polymer supported waveguides for RF-Energy applications

Features

- Compatible with RFEX connectors
- High design flexibility
- Supports direct integration of power combiners and splitters
- High power capability
- Smaller size than rectangular waveguides
- Light weight
- Cost efficient



Technical Specification

Electrical Data

Frequency	2.4 – 2.5 GHz ⁽¹⁾⁽²⁾
Power rating @ 25°C	1.5 kW ⁽³⁾
Losses	0.14 dB/m ⁽³⁾

⁽¹⁾ The waveguide in combination with RFEX connectors is intended for use in the 2.45-GHz ISM-band. For other applications, achievable bandwidth is significantly higher.

⁽²⁾ Waveguides for other frequency bands are available on request.

⁽³⁾ Values for fully dielectric loaded waveguide. Losses change depending on dielectric loading and used material.

Mechanical Data

Dimensions (cross section)	56 x 28 mm ⁽³⁾
----------------------------	---------------------------

Environmental Data

Operational temperature	80°C (120°C) ⁽⁴⁾
2011/65/EU, RoHS	Compliant

⁽⁴⁾ Higher temperatures possible with other dielectric filler materials.

Order Information

Polymer supported waveguides are available for customer specific design-ins. Product is also available as hollow waveguide, providing the same level of flexibility, allowing for higher power levels, but have a larger cross section. For details, please contact your HUBER+SUHNER sales representative.