

## Quick-Fit plus connectors

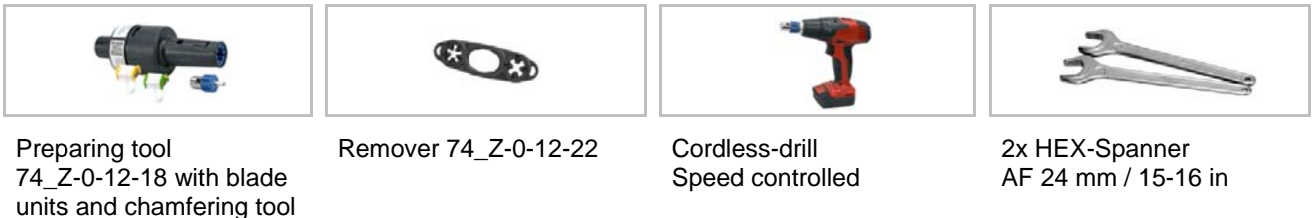
### Safety Instructions



### Connector Types

	Straight cable plug	Right angle cable plug	Straight cable jack
<b>N type</b>	11_N-50-12-60/-61	on request	21_N-50-12-60/-61
<b>4.3-10 type</b>	11_4310-50-12-X60/-X61	16_4310-50-12-X60/-X61	21_4310-50-12-60/-61
<b>7/16 type</b>	11_716-50-12-60/-61	on request	21_716-50-12-60/-61

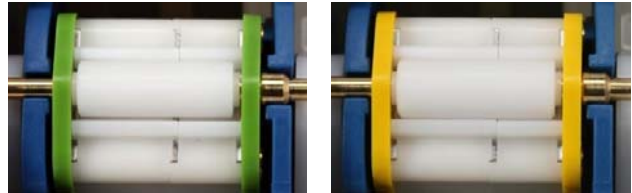
### Required Tools



#### i Check appropriate blade unit

**Green** 74\_Z-0-12-21  
HUBER+SUHNER Sucofeed\_1/2\_PW  
RFS ICA12-50JPLW, RFS ICA12-50JPL

**Yellow** 74\_Z-0-12-20  
ANDREW HL4RPV-50



#### 1 Perform rough cut

If the cable must be cut for length, leave around 3" (7 cm) of cable beyond the expected connector cable entry point. Use a tube cutter in order to avoid shavings. Then straighten approx. 20" (500 mm) of the cable end.



#### 2 Set START/END position

Make sure that the preparing tool is in the START/END position by rotating the left part of the tool clockwise or counter-clockwise.



#### 3 Position tool

Slide the tool according the cable direction indicator on the cable until it is visible in the opening at least. Mind connector's cable entry reference on the tool.



## Quick-Fit plus connectors

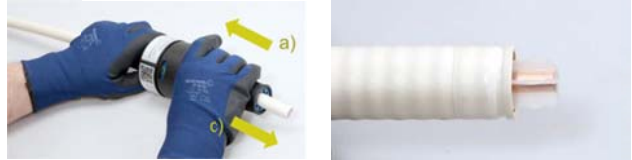
### 4 Cut

- Hold preparing tool at the grip whilst keeping the plenum cable in preferred axial position
- Turn the base tool manually or supported in clock wise direction until START/END position is reached again after about 14 turns



### 5 Eject cut sections

- Slide the preparing tool backwards away from the cable end
- Remove loose jacket outer conductor ring 1<sup>st</sup>
- Remove the tool from the cable



### 6 Remove dielectric and jacket

Use the removing tool and remove the dielectric by using the appropriate star shape then remove the jacket.



### 7 Chamfer center conductor

Chamfer the centre conductor by use of the chamfering tool until stop.



### 8 Position connector

- Slide the connector onto latching CLICK position
- Verify the connector is proper settled by counter movement



### 9 Fix connector

Remove the red locking clip and torque the cable entry part (AF 24 mm / 15, 16 in) while keeping the connector body in stationary position until the positive stop.



For latest assembly instruction with full product range, please visit –  
[www.hubersuhner.com/QuickFitPlus](http://www.hubersuhner.com/QuickFitPlus)