

ODC[®] - 2 outdoor connector plug/socket



Features

- 2 fibers, singlemode or multimode
- Compact design with 2 x 1.25 mm ferrules
- Built-in socket with square or hexagonal flange
- Extension connector for cable chaining
- Screwed locking mechanism
- Easy and safe installation
- Waterproof, dust proof and corrosion resistant
- Waterproof protection caps
- EMI protected
- RoHs compliant
- Full compatibility with previous version
- Fulfills performance standard IEC 61753-1 Cat. E

Specifications

Technology		full ceramic ferrule and sleeve
Housing material		nickel-plated brass
Mechanical performance	ODC-2 plug	≤ 800 N tensile load ≤ 30 N static side load
	ODC-2 socket	≤ 30 N static side load
Installation torque force	min. 1 Nm	max. 2 Nm
Operating temperature ¹⁾	IEC 61300-2-22	- 40 °C to + 85 °C
Mating durability		1000 cycles ²⁾
Ingress protection (mated)	IEC 60529	IP 68
Salt mist	IEC 61300-2-26	30 days passed
Vibration	IEC 61300-2-1	passed 10 Hz - 500 Hz / 10 g
Shock	IEC 61300-2-9	passed 100 g

¹⁾ depending on cable type

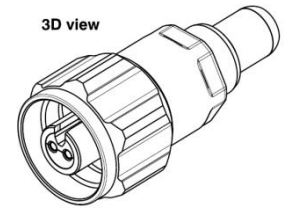
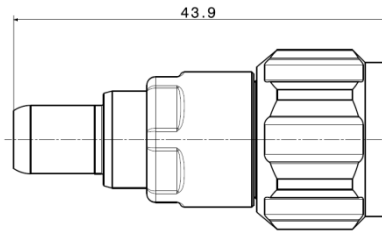
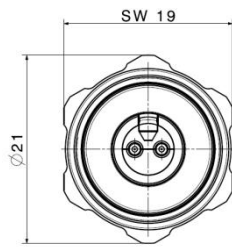
²⁾ with repeated cleaning

Optical performance

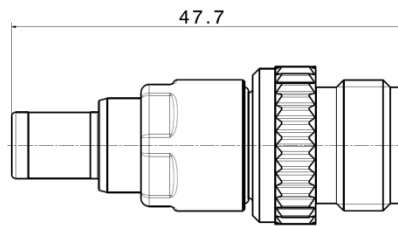
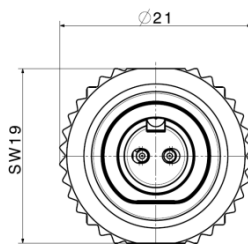
Insertion loss IEC 61300-3-34	singlemode	typ. ≤ 0.20 dB	97 % ≤ 0.45 dB
	multimode	typ. ≤ 0.20 dB	97 % ≤ 0.50 dB
Return loss	singlemode	≥ 50 dB	

ODC[®]-2 outdoor connector plug / socket

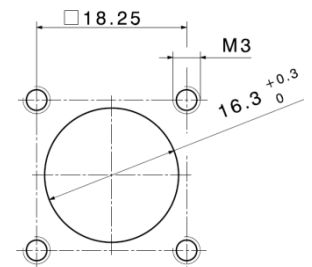
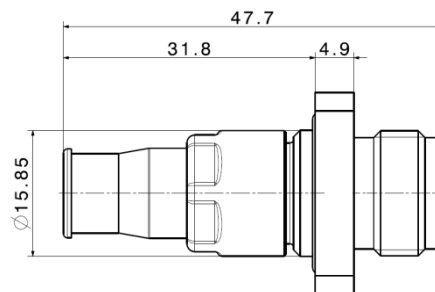
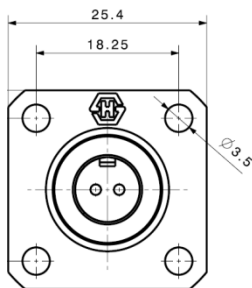
Standard type ODP1, ODP2: ODC-2 plug



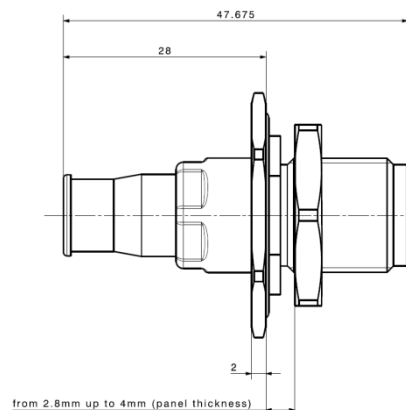
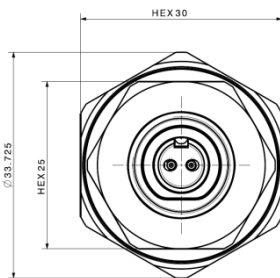
Standard type ODE1, ODE2: ODC-2 extension



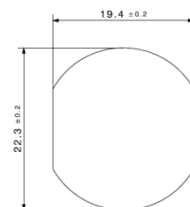
Type ODS1, ODS2: ODC-2 socket - square small



NON-standard type ODR1, ODR2: ODC-2 socket hexagonal, mounted from the rear






hole pattern



ODC[®]-2 outdoor connector plug / socket

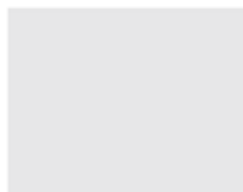
Overview of ODC-2 connector types

Type	Type new	Connector	Dust cap
A1	ODP1	ODC-2 plug 	screwed cap with pulling feature  IP68
A4	ODP2		screwed cap with chain  IP68
E1	ODE1	ODC-2 extension (socket type) 	screwed cap  IP68
E3	ODE2		screwed cap with chain  IP68
C1	ODS1	ODC-4 socket, square small 	screwed cap  IP68
C3	ODS2		screwed cap with chain  IP68
B3	ODR1	ODC-4 socket, hexagonal mounted from rear 	screwed cap  IP68
B4	ODR2		screwed cap with chain  IP68

HUBER+SUHNER is certified according to ISO 9001, ISO 14001, ISO/TS 16949 and IRIS.

WAIVER

It is exclusively in written agreements that we provide our customers with warrants and representations as to the technical specifications and/or the fitness for any particular purpose. The facts and figures contained herein are carefully compiled to the best of our knowledge, but they are intended for general informational purposes only.



HUBER+SUHNER AG
Degersheimerstrasse 14
9100 Herisau/Switzerland
Tel. +41 71 353 4111
Fax +41 71 353 4590
info@hubersuhner.com