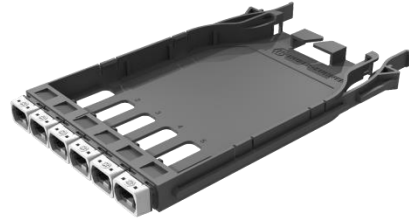


IANOS Base-8 MTP-MTP patch module

Description

- 6x MTP8 patching module
- Fast and tool-less installation
- Facilitates patching to transceiver
- Compact and robust plastic construction
- Compatible with IANOS EDR 1U/ 4U and EDR zero space chassis
- Colour coded MTP adapters



Technical data

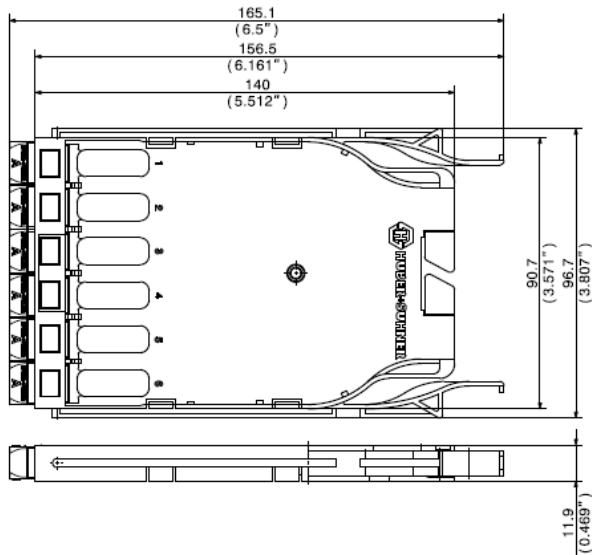
Description	Value
Product family	IANOS
Suitable for	EDR chassis EDR zero space chassis
Dimensions (W x D x H)	97 x 165 x 12 mm/ 3.81 x 6.5 x 0.47 in
Weight	45 g / 1.59 Oz
Material	PC/ABS
Colour	black (RAL 9005)
Number of adapters	front: 6x MTP8 adapter rear: n/a
Adapter types	front: MTP8 adapter KeyUp / KeyDown (reversible to KeyUp / KeyUp if needed) rear: n/a
Adapter colours	front: Black adapter with grey shroud (MTP8) rear: n/a
Ferrule material	MTP: composite

Environmental data

Characteristics	Value
Free of halogen	yes
2011/65/EC (RoHS)	fully compliant

IANOS Base-8 MTP-MTP patch module

Technical drawing



Ordering information

Description	Item number
Patching module, single size, Base-8, 6x MTP8 adapter body black, shroud grey, key up/ key down	85072925
Patching module, single size, Base-8, 6x MTP8 adapter body black, shroud grey, key up/ key up	85072926

Related documents

Installation manual DOC-0000730269