

INSTALLATION MANUAL

HUBER+SUHNER

HUBER+SUHNER AG

Fiber Optics

MASTERLINE Flex Box

DOC-0000893698

August 21, 2020

Rev. A

Page 1 of 4

MASTERLINE Flex Box, Ericsson rail bracket option

Table of contents

•	GENERAL INFORMATION	1
•	NOTES IN THIS MANUAL	1
•	NOTES ON THE FULFILMENT OF LEGAL CRITERIA	1
•	INSTALLATION	2
•	REVISION HISTORY	4

GENERAL INFORMATION

Read the cable system user manual and installation manual carefully. General safety instructions apply unless this document stipulates more specific instructions. HUBER+SUHNER declines all liability and claims if the specifications are not met. The cables and modules are only an example and are for illustrative purposes, they do not serve any technical purpose.

NOTES IN THIS MANUAL

The following symbols are used in this manual.



Info notes:

Info notes contain important instructions for installation and proper use of the product throughout its life cycle. The info notes also indicate that non-compliance may result in material damage or financial loss.



Notes about hazards and safety precautions:

Notes which indicate that non-compliance may result in danger to life and limb, as well as to material damage. It is imperative that these notes are heeded.

NOTES ON THE FULFILMENT OF LEGAL CRITERIA

The installation of optical communications systems requires that requisite permits be obtained from all the competent authorities. The installation technician is responsible for compliance with all applicable regulatory restrictions, usage regulations and other guidelines. This applies to permanent and temporary installations.

- Ascertain the applicable restrictions and usage regulations prior to installation.
- Draw up a cable-laying plan prior to installation.
- Check the finished system for compliance with usage and safety regulations.
- It is assumed that the installation and re-installation is only carried out by trained personnel.

INSTALLATION

Step 1:

Opening and closing of the MLFB:



Handling with the box:

The MLFB box has edges and an opening mechanism which requires the use of screwdrivers. Use protective gloves and work carefully to avoid trapping or hurting fingers or other parts of the body.



Open and close MLFB box :

To open and close of the lid, open and close the 4 screws of the box with an appropriate screw driver.



Step 2:

Remove box from bracket:



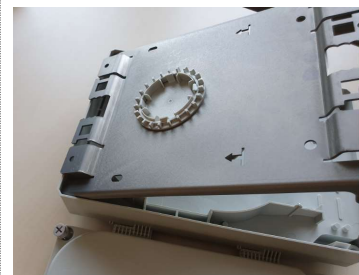
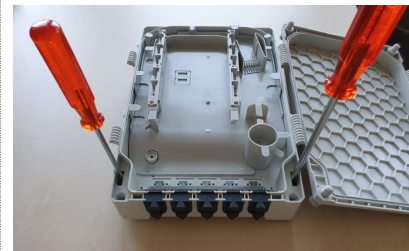
Handling with the box:

The MLFB box has edges and an opening mechanism which requires the use of screwdrivers. Use protective gloves and work carefully to avoid trapping or hurting fingers or other parts of the body.



Remove box from bracket:

Open the MLFB and insert 2 screwdrivers in the two slots provided. Push the two screwdrivers down so that the two tabs are pushed outwards. Now the upper case can be separated from the bracket.



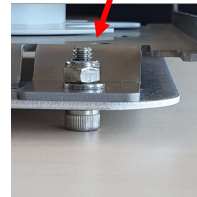
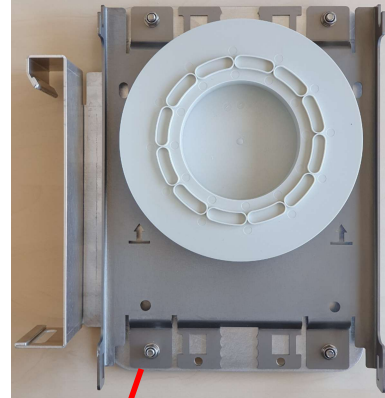
Step 3:

Mounting of Ericsson rail bracket:



Mounting of bracket:

The Ericsson rail bracket must be attached directly to the MLUF mounting plate. The maximum torque of 7 Nm must not be exceeded. Ensure that a good and secure working table is used for mounting the bird protection bracket. Secure the installation/mounting area according to local and national regulations.



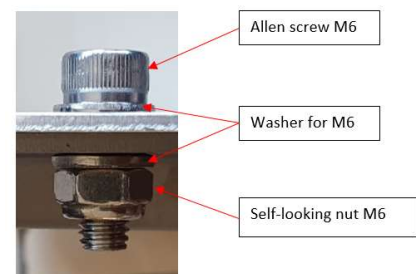
Mounting of bracket:

Use the tools usually provided for this purpose



Mounting of bracket:

The screw heads must be pushed through the hole of the two plates from below with a washer and secured with a second washer and nut.



Step 4:

Insertion of box base plate:



Snapping the box base plate into the metal bracket :

Snap the box base plate into the mounting plate. Use a carpet pad to avoid scratching the working plate and make sure that no parts of the body are trapped when closing the box.



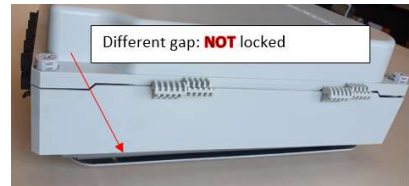
Snapping box into bracket :

Position the base plate on the base plate of the box so that the plastic cam guide can be inserted.



Snapping box into bracket :

Close the base plate of the box in such a way that a click noise is audible.



REVISION HISTORY

Revision	Description of detailed changes	Product manager Engineer	Date
Rev. A	First Version	David Neher	2020-08-21