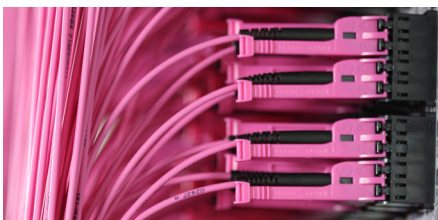


LC-XD Uniboot connectivity



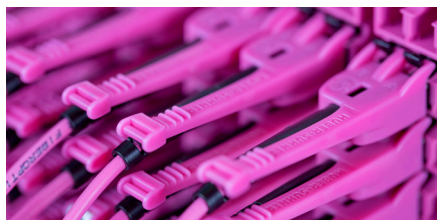
09.2019

Highest density



The LC-XD uniboot connector was designed for use in high-density environments and is very user-friendly for the operator.

Push-pull system



The revolutionary patented push-pull mechanism makes it the easiest LC connector to handle on site. It is best suited for rapidly-evolving data center and central office environments.

Easy handling



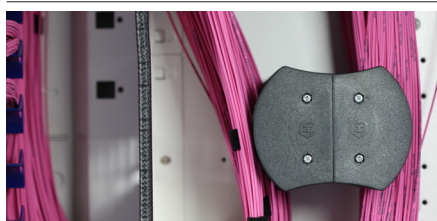
The robust extension lever is an added value and significantly facilitates handling. The lever can be provided with a two-digit number for better identification and improved traceability.

Polarity change



The high flexibility of the LC-XD means that polarity can be changed on site without any tools. Markings on the top of the connector indicate which polarity is currently used.

Reduced space usage



The uniboot design and bend optimised A2-fiber ensures a significant reduction of cable bulks and enables better traceability and fiber management.

Compatibility



The LC-XD connector is fully compliant with IEC 61754-20 and tested according to IEC 61753-1 Telcordia GR-326. Its axis distance can be automatically adjusted between standard (6.25 mm) and mini (5.25 mm) sizes.