

XCO - ruggedized exchangeable SFP connector



Features

- 2 fibers, singlemode or multimode
- Standard LC duplex interface
- Ruggedized outdoor connector for fiber-to-the-antenna and industrial application
- Exchange and service of SFP module possible
- Easy manual installation - no tool required
- High installation safety due to reliable snap-in strain relief system (patented solution)
- Water proof protection cap with pulling eye
- EMI protected
- RoHs compliant

Specifications

Technology		LC with full ceramic ferrules
Housing material		nickel-plated brass
Mating mechanism		patented snap-in strain relief system
Mechanical performance		≤ 500 N tensile load ≤ 30 N static side load
Operating temperature ¹⁾		-40 °C up to +85 °C
Mating durability	IEC 61300-2-2	500 cycles
Ingress protection (mated)	IEC 60529	IP68
Salt mist	IEC 61300-2-26	30 days passed
Vibration	IEC 61300-2-1	passed 10 Hz - 500 Hz / 10 g
Shock	IEC 61300-2-9	passed 50 g

¹⁾ depending on cable type

Optical performance

Insertion loss	singlemode	typ. ≤ 0.20 dB	97% ≤ 0.45 dB
	multimode	typ. ≤ 0.20 dB	97% ≤ 0.50 dB
Return loss	singlemode	≥ 50 dB	

Mating sequence



Remove protection cap and slide back connector housing



Snap connector into flange - full strain relief



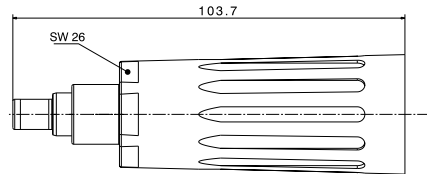
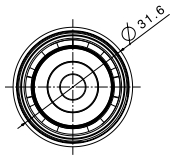
Remove LC dust caps and plug LC duplex connectors into SFP module



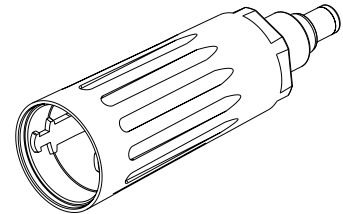
Screw-on housing to seal connector

XCO - ruggedized exchangeable SFP connector

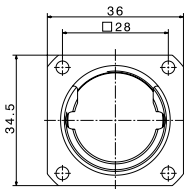
Type X1: XCO connector plug



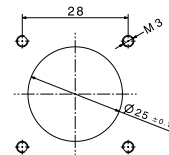
3D view



Type: XCO build-in flange

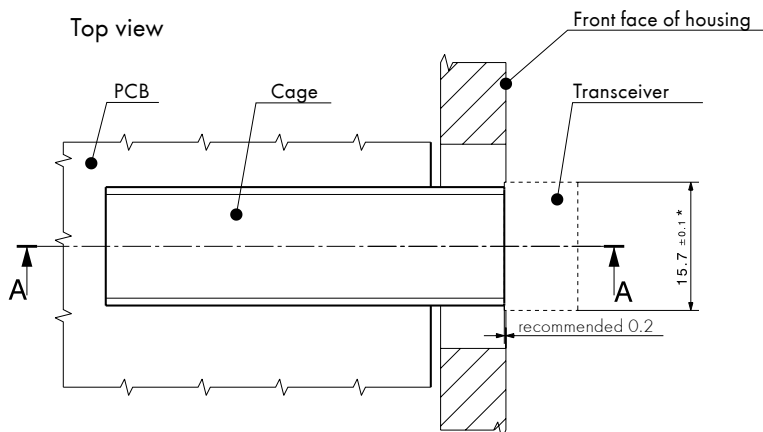


hole pattern



Description	Connector	Dust cap
X1	XCO connector 	 IP68
Item number 84074439	XCO build-in flange 	 IP68

Positioning dimensions of SFP module



Lateral mounting tolerance between SFP module and XCO flange = ± 0.5 mm

