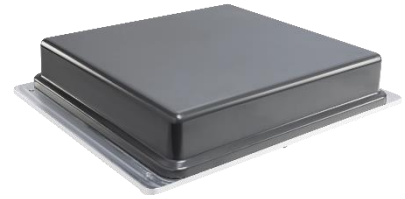


SENCITY® Rail MIMO+ 4x4 Antenna 1399.17.0303

Description

4-Port Railway rooftop antenna for cellular bands.
 Enables 4x4 MIMO with true polarisation diversity for high data throughput.
 Supporting 2G/3G/4G/5G bands between 694-4200 MHz.
 Average combined condition number on the supported cellular bands of <10dB on the primary antennas.
 Rugged design, meets EN 50155 railway standard.
 Fire retardant acc. to EN 45545-2 and NFPA130.
 High Voltage and High Current protection for use under catenary lines.



Product Configuration

Technical Data

Electrical Data

	Band 1	Band 2	Band 3	Band 4
Band Name	Vertical Polarisation	Vertical Polarisation	Vertical Polarisation	Horizontal Polarisation
Frequency (MHz)	617 - 960	1425 ±2690	3300 - 4200	694 - 960
VSWR	2.0	2.1	2.1	1.9
Impedance (Ohm)	50	50	50	50
Gain (dBi)	7	8	9	7
Composite power max (W)	80	80	80	80
Ambient temperature (°C)	25	25	25	25
Port Isolation (dB)	30	28	35	30

	Band 5	Band 6
Band Name	Horizontal Polarisation	Horizontal Polarisation
Frequency (MHz)	1515 - 2700	3300 - 4200
VSWR	2.1	2.2
Impedance (Ohm)	50	50
Gain (dBi)	9	9
Composite power max (W)	80	80
Ambient temperature (°C)	25	25
Port Isolation (dB)	28	35

Ports

	Port 1	Port 2	Port 3	Port 4
Port name	Vertical	Horizontal	Vertical	Vertical
Connector	N, jack (female)	N, jack (female)	N, jack (female)	N, jack (female)
Cable Type	RADOX_RF_142	RADOX_RF_142	RADOX_RF_142	RADOX_RF_142
Cable Length (m)	0.3	0.3	0.3	0.3
Polarization	vertical	horizontal	vertical	vertical
DC grounded	Yes	Yes	Yes	Yes

Connections

	Band 1	Band 2	Band 3	Band 4	Band 5	Band 6
Port 1	X	X	X			
Port 2				X	X	X
Port 3	X	X	X			

